



ROCKY MOUNTAIN WILD

# GIS & Conservation Mapping Services



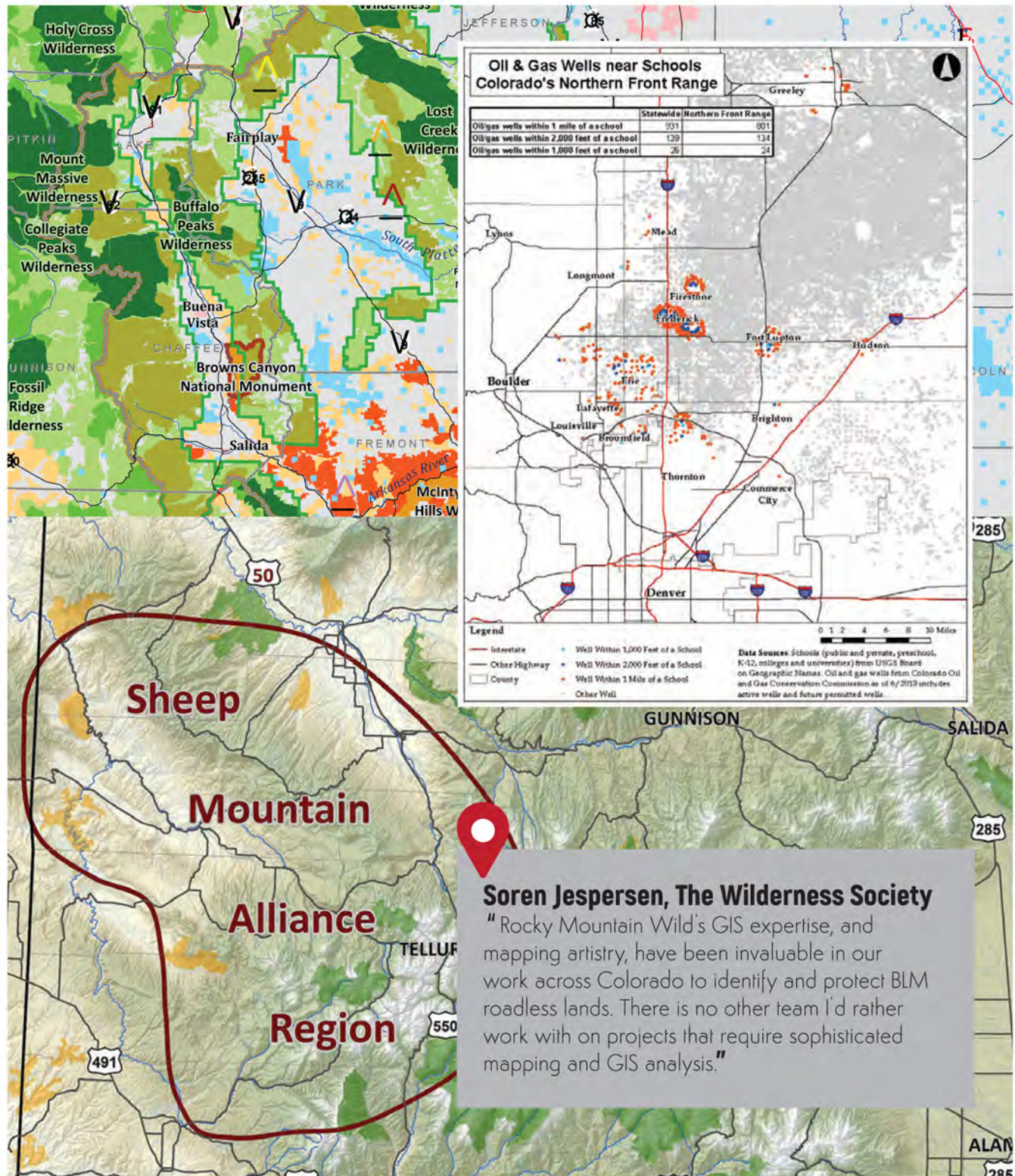
**You can't save it if you can't map it.**

## Rocky Mountain Wild

1536 Wynkoop St, Ste 900, Denver, CO 80202  
[rockymountainwild.org](http://rockymountainwild.org)

## For GIS and mapping services, contact:

303-454-3345  
[alison@rockymountainwild.org](mailto:alison@rockymountainwild.org)



## Soren Jespersen, The Wilderness Society

"Rocky Mountain Wild's GIS expertise, and mapping artistry, have been invaluable in our work across Colorado to identify and protect BLM roadless lands. There is no other team I'd rather work with on projects that require sophisticated mapping and GIS analysis."

## Quality Mapping Services

Rocky Mountain Wild provides the following GIS (Geographic Information Systems) and conservation mapping services:

- Map making/cartography
- Geographic data acquisition and research
- Geographic analysis and modeling
- Database design and development
- Mapping support for on-the-ground site inventory
- Biological and legal research

Finished products are suitable for: presentations, websites, posters, reports, brochures, and educational displays

## Conservation Expertise

For nearly 15 years, our geographers and biologists have worked with conservation groups to protect the animals, plants, and places of the Rocky Mountain region. Our expertise includes:

- Oil and gas leasing
- Threatened and endangered species protection
- Federal land management
- State wildlife and land management
- Animal and plant biology
- Landscape connectivity
- Biodiversity
- Public lands protection

## State-of-the-Art Tools

Rocky Mountain Wild uses the most current data and tools on our projects, including our one-of-a-kind Assessment for Biological Impact (ABI) GIS and database system. ABI allows us to assess the impacts of development and conservation proposals on key areas, and for hundreds of plant and animal species. Other tools used in our work include Esri's ArcGIS and Model Builder, Web Mapping, Story Maps, and Google Earth.

## Inspirational Success

Our high-quality maps and detailed analysis of key environmental issues allow our partners to protect wildlands and wildlife throughout the Rocky Mountain West. Our successes include:

- Over 2 million acres of public land deferred from oil and gas development
- Identifying and mapping 939 oil and gas wells near schools to highlight issues with ozone pollution
- Educational displays on watershed preservation seen by over 7,000 school children, families, and public groups per year
- Mapping of over 1 million acres of BLM land that should be protected as Lands with Wilderness Characteristics.

**Get your maps from the organization all the conversation and environmental organizations trust.**



## Satisfied Clients

A partial list of our clients include: Conservation Colorado, Defenders of Wildlife, High Country Conservation Advocates, NationalParks Conservation Association, National Wildlife Federation, Trust for Public Lands, Wild Connections, The Wilderness Society, and local communities.